



JEEP JK REAR COIL ANGLE SHIM KIT

Thank you for choosing Rough Country for your suspension needs.

In addition to these instructions, professional knowledge of disassemble/reassembly procedures as well as post installation checks must be known. Attempts to install this system without this knowledge and expertise may jeopardize the integrity and/or operating safety of the vehicle.

PRODUCT USE INFORMATION

Rough Country makes no claims regarding lifting devices and excludes any and all implied claims. We will not be responsible for any product that is altered.

If question exist we will be happy to answer any questions concerning the design, function, and correct use of our products by calling 1-800-222-7023.

NOTICE TO DEALER AND VEHICLE OWNER

Any vehicle equipped with any Rough Country product should have a "Warning to Driver" decal installed on the inside of the windshield or on the vehicle's dash. The decal should act as a constant reminder for whoever is operating the vehicle of its unique handling characteristics. **INSTALLING DEALER** - it is your responsibility to install the warning decal and forward these installation instructions on to the vehicle owner for review. These instructions should be kept in the vehicle for its service.

This kit is intended to be used with 4"-6" kits to correct the rear coil angle.

Tools Needed:

Needle Nose Pliers
Hammer
Jack Stands
Floor Jack
10mm Socket / Wrench
18mm Socket / Wrench
19mm Socket / Wrench

Kit Contents:

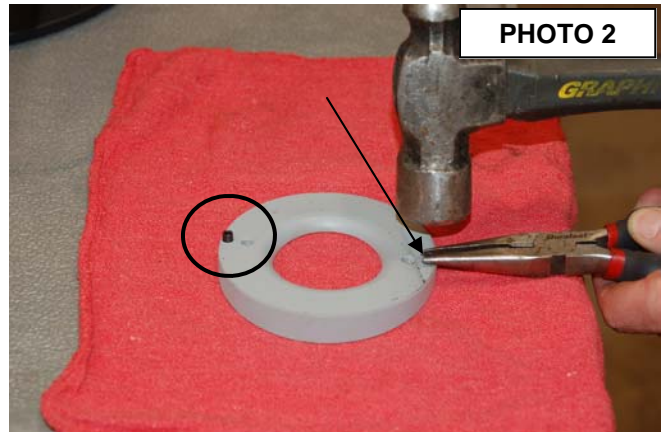
Coil Spacer (2)
Poly Bag (1)
1-Poly Bag Containing:
Roll Pins (4)



Thank you for choosing Rough Country for your suspension needs.

INSTALLATION INSTRUCTIONS

1. Chock front wheels. Jack up the rear of the vehicle and support the vehicle with jack stands, so that the rear wheels are off the ground. Position a jack so it supports, but does not raise the rear axle.
2. Remove the rear tires/wheels, using a 19mm deep well socket.
3. The next steps are performed to ensure sufficient travel to remove the coil springs
4. On the rear of the vehicle remove the factory sway bar link from the axle using a 18mm socket and wrench. Retain hardware for reuse.
5. Using a 10mm wrench, unbolt the brake hose bracket at the frame. Retain hardware for later use. **See Photo 1.**
6. Remove the rear shocks from the lower mount using a 18mm wrench. Retain stock hardware.
7. Lower the axle enough to remove the stock coil springs.
8. With the shim spacer laying on a flat surface angle side down. Install the roll pins on the flat part of the coil shim as shown with needle nose pliers and a hammer. Lightly tap the roll pin until it is flush with the other side. **See Photo 2.**



9. Install the spacer with the roll pins down on the stock coil seat. Making sure the pins are secured on the seat with the thick part towards the rear. The pins will keep the spacer stationary. **See Photo 3.**
10. Install the coil spring as shown in **Photo 4.**



11. Reinstall the factory sway bar link using a 18mm socket and wrench on the axle.
12. Reinstall the brake hose bracket in the stock location using a 10mm wrench.
13. Reinstall the rear shocks on the axle mount using a 18mm wrench.
14. Reinstall the tires and wheels and lower to the ground.

Also available for the rear of the JK Jeep is a Coil Retainer kit. Part # 1132.



POST INSTALLATION

- Check all fasteners for proper torque. Re-torque all fasteners after 500 miles and recheck after 1000 miles.

**ROUGH
COUNTRY**
SUSPENSION SYSTEMS