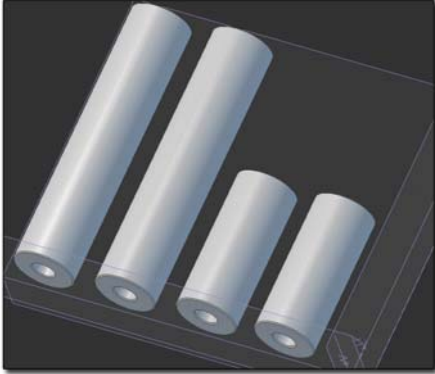




Warrior, Inc.
11100 SW Industrial Way
Tualatin, Oregon 97062
(503) 691-8915 Main
(503) 692-0364 Fax
(888) 220-6861 Toll Free
techsupport@warriorproducts.com

SUBJECT: #2300 Series Alumi-Rollers Replacement Fairlead Rollers



Part Numbers:

pn2300 – Fits 7.875" wide fairleads; commonly found on Warn brand fairleads

pn2310 – Fits 7.5" wide fairleads; commonly found on Ramsey, MileMarker, T-Max, Superwinch & Warn brand fairleads

pn2320 – Fits 8" wide fairleads; commonly found on Superwinch S6000, S9000, X6CD & X9 models

Phase 1: Roller Removal

1. This can be done on vehicle with most vehicles but is easiest to do on a workbench with the fairlead uninstalled.
2. Remove the clips holding the vertical two roller pins into place and slide roller pins out.
3. Remove the vertical rollers.
4. Remove the clips holding the horizontal two roller pins into place and slide roller pins out.

Phase 2: Alumi-Roller Installation

1. This is as simple as reversing steps.
2. Install the horizontal rollers first. Slide them into place, install the pin, and install the snap ring.
3. Install the vertical rollers second. Slide them into place, install the pin, and install the snap ring

Installation is completed. Visit www.warriorproducts.com to see more of our Jeep Cherokee Accessories.