



09 & Up Dodge 4WD 1500 2.5" Leveling Kit

Thank you for choosing Rough Country for all your suspension needs.

Rough Country recommends a certified technician install this system. In addition to these instructions, professional knowledge of disassemble/reassembly procedures as well as post installation checks must be known. Attempts to install this system without this knowledge and expertise may jeopardize the integrity and/or operating safety of the vehicle.

Please read instructions before beginning installation. Check the kit hardware against the kit contents list on the back page. Be sure you have all needed parts and know where they go. Also please review tools needed list and make sure you have the tools needed to install the kit.

PRODUCT USE INFORMATION

As a general rule, the taller a vehicle is, the easier it will roll. Seat belts and shoulder harnesses should be worn at all times. Avoid situations where a side rollover may occur.

Generally, braking performance and capability are decreased when larger/heavier tires and wheels are used. Take this into consideration while driving. Do not add, alter, or fabricate any factory or after-market parts to increase vehicle height over the intended height of the Rough Country product purchased. Mixing component brands is not recommended.

Rough Country makes no claims regarding lifting devices and excludes any and all implied claims. We will not be responsible for any product that is altered.

We will be happy to answer any questions concerning the design, function, and use of our products.

This suspension system was developed using a 33X12.50/17, tire with factory wheels.

NOTICE TO DEALER AND VEHICLE OWNER

Any vehicle equipped with any Rough Country product should have a "Warning to Driver" decal installed on the inside of the windshield or on the vehicle's dash. The decal should act as a constant reminder for whoever is operating the vehicle of its unique handling characteristics.

INSTALLING DEALER - it is your responsibility to install the warning decal and forward these installation instructions on to the vehicle owner for review. These instructions should be kept in the vehicle for its service life.

Tools Needed:

8mm Wrench
 15mm Socket / Wrench
 14mm Socket / Wrench
 18mm Socket / Wrench
 21mm Socket / Wrench
 22mm Socket / Wrench
 24mm Socket / Wrench
 9/16" Socket

Torque Specs:

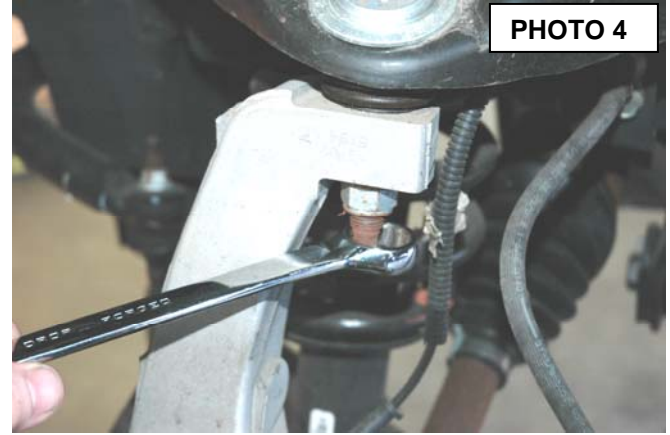
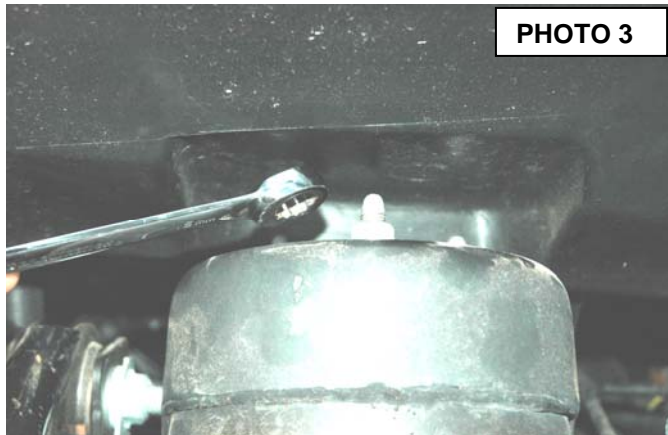
Size	Grade 5	Grade 8
5/16"	15 ft/lbs	20 ft/lbs
3/8"	30 ft/lbs	35 ft/lbs
7/16"	45 ft/lbs	60 ft/lbs
9/16"	95 ft/lbs	130 ft/lbs
	Class 8.8	Class 10.9
10MM	32ft/lbs	45ft/lbs
18MM	170ft/lbs	240ft/lbs

INSTALLATION INSTRUCTIONS

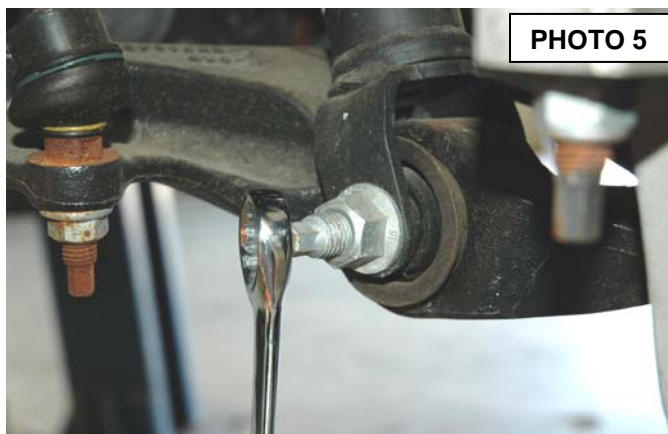
1. Jack up the front of the vehicle and support the vehicle with jack stands, so that the front wheels are off the ground.
2. Using 22mm socket remove the front tires/wheels.
3. Using 21mm socket remove the nut from the steering linkage. Using a hammer hit on the side of the knuckle as shown, and remove the linkage from the knuckle. Push linkage forward to make room for installation. Retain factory hardware **See PHOTO 1.**
4. Using a 15mm wrench, remove the sway bar nut, and bushings allowing the sway bar to drop. Retain factory hardware. **See PHOTO 2.**



5. Using a 15mm socket, remove the strut nuts on the upper strut tower. **See PHOTO 3**
6. Place jack stand under the knuckle for support. Using 21 mm socket remove upper ball joint nut. Using a hammer hit the knuckle to allow the ball joint to separate from the upper control arm **See PHOTO 4.** Do not allow the knuckle to pull out far enough that it pulls the shaft out of the differential.



7. Using a 24mm socket and 21mm wrench, remove the strut bolt from the lower control arm and remove the strut assembly from the vehicle. Retain the factory lower bolt for reassembly. Note the direction of the bolt for reassembly. **See PHOTO 5.**
8. Locate the supplied 3/8" stud extensions. Using a 9/16" socket snug self clinching stud in the new spacer as shown in **Photo 6.** **The stud should clinch with about 35-45 ft/lbs of torque. Do not over torque the nut.**



9. Place the strut extension on the strut and tighten using the factory hardware. **See PHOTO 7.**
10. Install the strut assembly into the strut tower and start using the supplied 3/8" nuts.
11. Install the lower strut bolt in the original position that it was removed. Torque to factory specs.
12. Using a floor jack, raise the lower control arm and connect the upper ball joint on the upper control arm to the spindle. Torque to manufacturer specs.
13. Using a 21mm socket reinstall the steering linkage nut .
14. Repeat steps 3-13 on opposite side of vehicle
15. Using 15 mm wrench reinstall sway bar bushings and nut using factory hardware. Torque to factory specs.
16. Install the wheels / tires.
17. Jack up the vehicle and remove the jack stands. Lower the vehicle to the floor and torque all bolts to factory specifications.



PHOTO 7

REAR INSTALLATION

1. Jack up the rear of the vehicle and place jack stands underneath the frame rail.
2. Support the rear axle with a floor jack.
3. Remove the tires and wheels.
4. Remove the stock shocks from the lower shock mount using a 21mm wrench. **See Photo 8.**
5. Remove the sway bar link from the sway bar using a 18mm and 8mm wrench. **See Photo 9.**



PHOTO 8

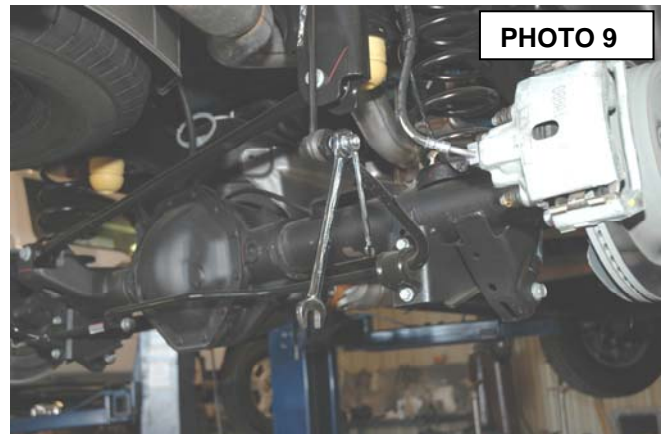


PHOTO 9

6. Lower the axle with the floor jack and remove the coils springs. **See Photo 10.**
7. Install the flat upper spacer retainer as shown in **Photo 11** on the upper coil seat.



PHOTO 10

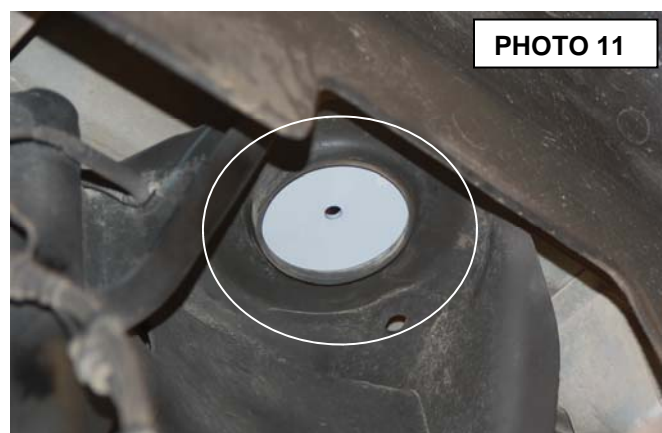
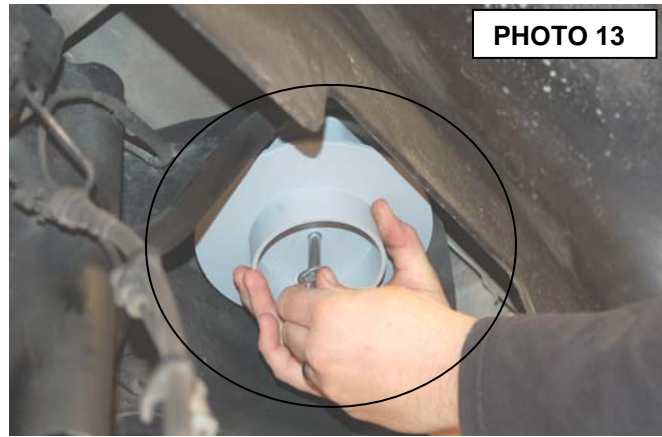


PHOTO 11

8. Install the spring spacer and secure with the supplied 3/8" x 2 1/2" bolt through the upper flat retainer to hold the spacer in place. Tighten using a 14mm Socket & wrench. **See Photo 13.**
9. Reinstall the coil spring.
10. Lift the axle with the floor jack and reinstall the stock shocks with the stock hardware using a 21mm wrench.
11. Reinstall the sway bar link on the sway bar using a 18mm and 8mm wrench.
12. Reinstall the tires /wheels and remove the jack stands.
13. Lower the vehicle to the ground.



POST INSTALLATION

1. Check all fasteners for proper torque. Check to ensure there is adequate clearance between all rotating, mobile, fixed and heated members. Check steering for interference and proper working order. Test brake system.
2. Perform steering sweep. The distance between the tire sidewall and the brake hose must be checked closely. Cycle the steering from full turn to full turn to check for clearance.
3. Re torque all fasteners after 500 miles. Visually inspect components and re torque fasteners during routine vehicle service.
4. Readjust headlights to proper settings and take truck in for a front-end alignment to a qualified alignment professional.

KIT COMPONENTS



KIT CONTENTS:

- 2-Front Strut Extensions
 - 1-359Bag that includes:
 - 6-3/8" Studs
 - 6-3/8" Nuts
 - 6-3/8" Lock Washers
- 2-Rear Coil Spacers
 - 1-359Bag2 Includes:
 - 2-3/8" x 2 1/2" Bolts
 - 2-3/8" Nylock Nuts
 - 4-3/8" Flat Washers

Thank you for purchasing a Rough Country Leveling System.

**ROUGH
COUNTRY**
SUSPENSION SYSTEMS