



## JEEP JK FRONT BUMPER CAPS

Thank you for choosing Rough Country for your suspension needs.

Rough Country recommends a certified technician install this system. In addition to these instructions, professional knowledge of disassemble/reassembly procedures as well as post installation checks must be known. Attempts to install this system without this knowledge and expertise may jeopardize the integrity and/or operating safety of the vehicle.

Please read instructions before beginning installation. Be sure you have all needed parts and know where they go. Please review tools needed list and make sure you have needed tools.

### PRODUCT USE INFORMATION

If question exist we will be happy to answer any questions concerning the design, function, and correct use of our products by calling 1-800-222-7023.

#### Kit Contents:

Dr Side Bumper Cap  
Pass Side Bumper Cap

1-Poly Bag Containing:  
10-Black Pins

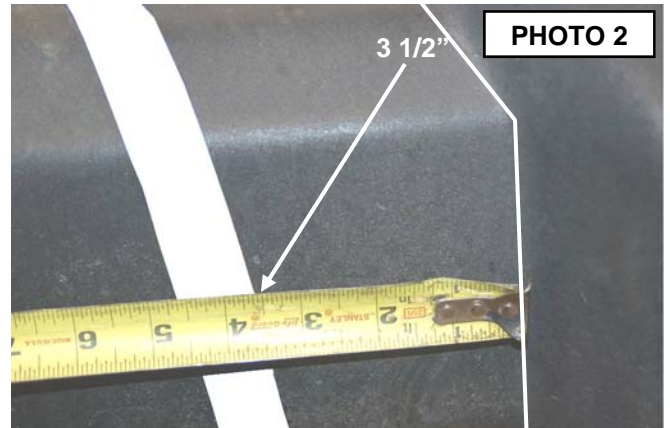
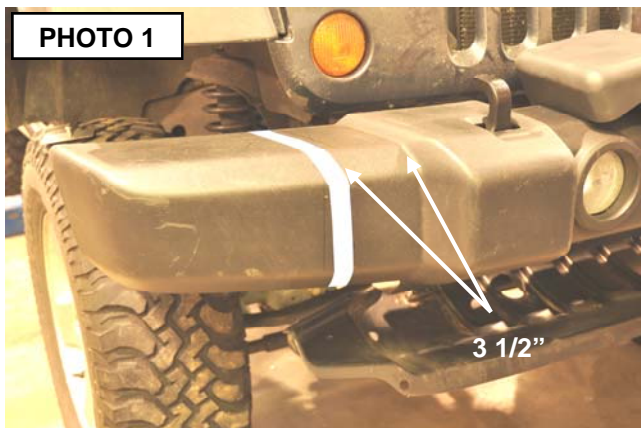
#### Tools Needed:

Reciprocating Saw  
Tape Measure  
Drill  
1/4" drill bit  
Masking Tape  
Phillips Screw-driver



### INSTALLATION INSTRUCTIONS

1. Park the vehicle on a level surface.
2. Measure over 3 1/2" as shown on the bumper and mark with tape as shown. **See Photo 1 & 2.**



3. Remove the Phillips screws (2) securing the lower cover to the bumper as shown in **Photo 3** to allow the bumper and lower cover to be trimmed.
4. Cut the bumper using a reciprocating saw, making sure to remove the steel bumper behind the plastic bumper. **See Photo 4.**



**PHOTO 3**

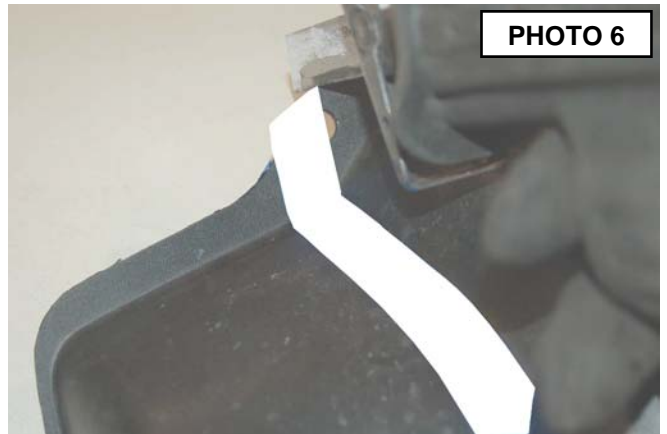


**PHOTO 4**

5. Mark the lower cover as shown in **Photo 5**.
6. Cut using a reciprocating saw as shown in **Photo 6**. (**Cover shown removed from vehicle for picture purposes but does NOT have to be removed, trimming can be accomplished while installed on the vehicle**).



**PHOTO 5**

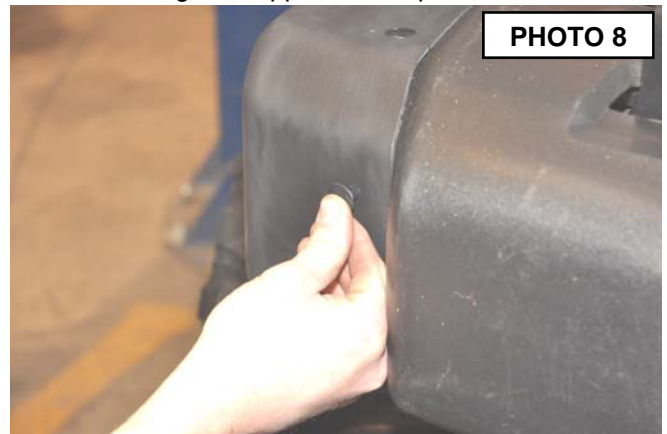


**PHOTO 6**

7. Place the caps on the bumper making sure the caps are aligned with the bumper. **Note: There is a passenger and drivers side cap.**
8. Using a 1/4" drill bit, drill the 5 holes per cap using the bumper cap as a guide. **See Photo 7.**
9. Lastly install the driver and passenger side caps as shown in **Photo 8** using the supplied black pins.



**PHOTO 7**



**PHOTO 8**

Thank you for purchasing a Rough Country Suspension Component.