

sPOD Installation Instructions Toyota FJ Cruiser

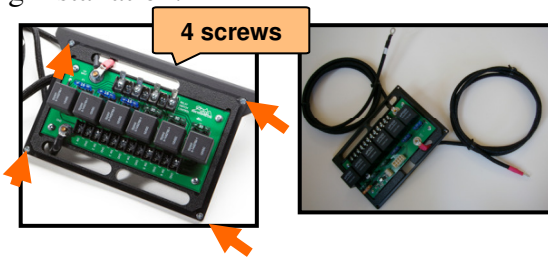
www.4x4s-POD.com

Allow approximately 2- 3 hours for installation

Tools required

- Phillips head screw driver.
- 10mm socket and extension.
- Drill motor + 5/16" Nut-Driver
- T-20 TORX bit & T-25 TORX bit
- Dremel Tool or File.

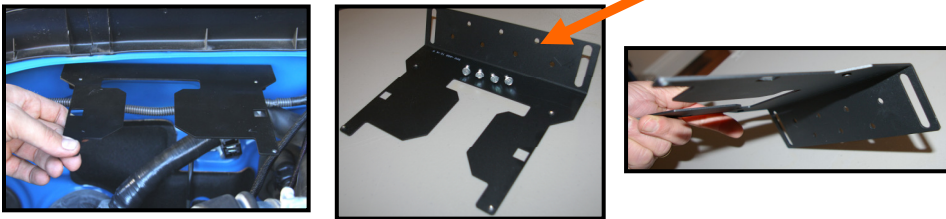
1. Remove the Source board from mounting plate by removing the 4 Phillips head screws for easier access during installation.



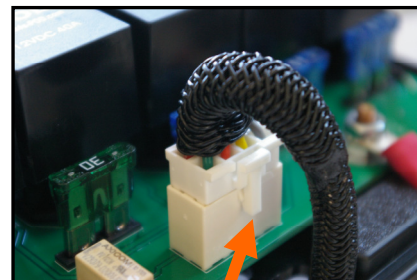
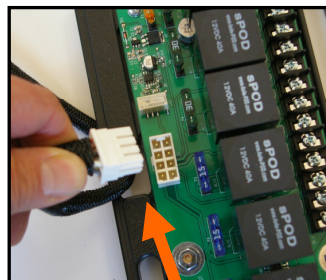
2. First move the OEM harness out of the way.

3. Mount the bracket to existing studs on the passenger's side firewall aligning over slots in bracket.

- Use the 4 self drilling screws in any of the 4 available holes. Do not re-mount the Source yet.



4. From inside on the driver's side, look under dash on the firewall for the steering column and feed the harness with the white connector through the rubber boot.



sPOD Installation Instructions
Toyota FJ Cruiser
www.4x4s-POD.com



5. Re-attach The Source to the bracket with the four Phillips-head screws.
*** DO NOT OVERTIGHTEN ***
Replace lid.



6. Secure power cables with cable ties and run them to the battery.
Do not connect to battery yet



7. Unscrew transfer case knob (and 6MT shift knob if necessary). Pull up (un-snap) the upper console and remove.



8. Remove two 10mm bolts from the storage area of the center console. Remove the remaining portion of the center console.

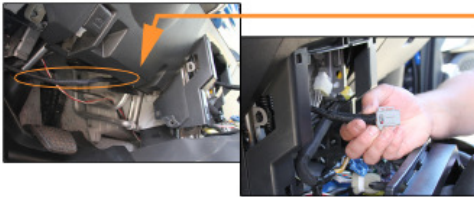


9. Remove 10mm bolts from each side of the switch panel housing face. Remove plastic retaining plugs from each side of the switch panel housing.

sPOD Installation Instructions
Toyota FJ Cruiser
www.4x4s-POD.com



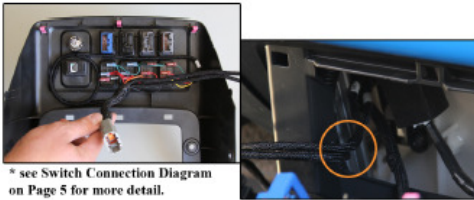
10. Replace the transfer case knob to protect switch panel from scratches. Gently remove switch panel. Label and disconnect existing factory switches.



11. Route the wire harness underneath the steering column and through the side of the switch panel housing.



12. Consolidate factory switches into the upper row.* File down remaining openings to ensure a snug fit for remaining switches. Repeat for switch blanks next to steering column.



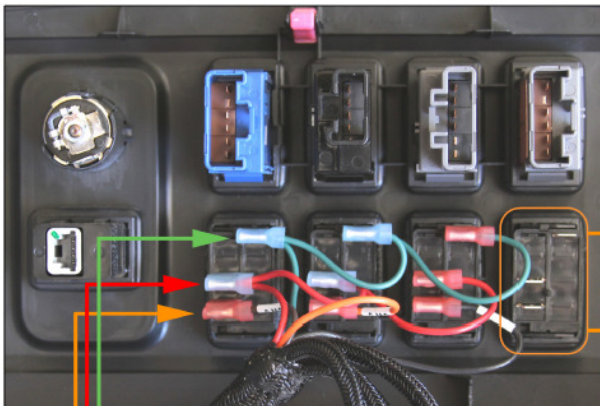
* see Switch Connection Diagram on Page 5 for more detail.

13. Connect harness to switches (see Switch Connection Diagram)
Return switch panel to the center console and route longer pigtail up to the switches next to the steering column.



14. Pull pigtail through switch blanks, connect to switches and re-mount to panel. Connect switch pigtail to wire harness.

* Or arrange as dictated by the number of existing factory switches.

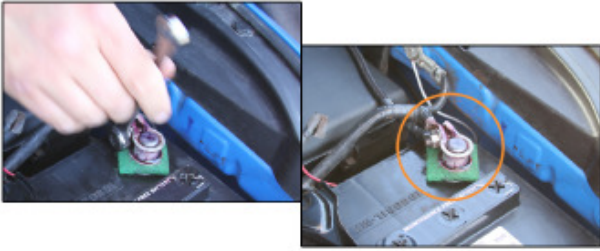


Use this diagram for the connections to Contura switches. The red wires are your HOT leads and the green wires are your NEGATIVE wires. All other wires are labeled on the long pigtail. Just match the wires to the switches and the order in which they are used.

Top of switch
 Bottom of switch

Green daisy chain on top row.
 Red daisy chain on center row.
 Line out to accessories on bottom row.

sPOD Installation Instructions
Toyota FJ Cruiser
 www.4x4s-POD.com



15. Attach wire harness ground to the negative (-) terminal of the battery.



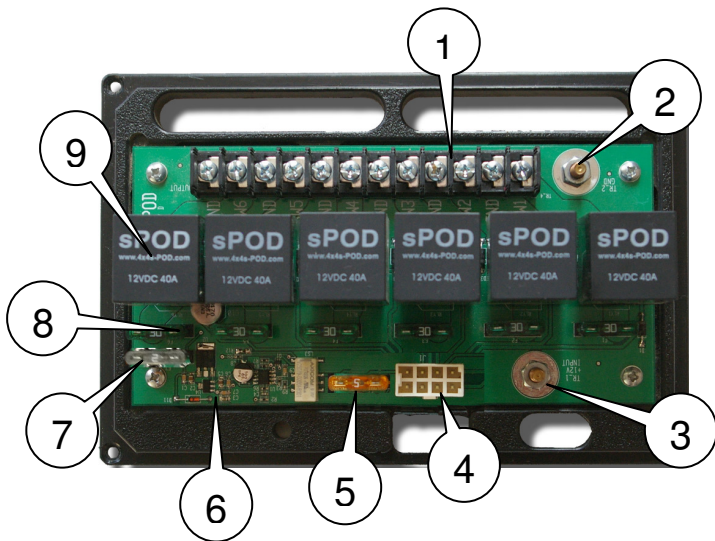
16. Connect the red wire to the positive side of the battery.



17. Turn on each switch and confirm each light indicator functions properly.



18. Tidy up wires and harnesses with cable ties and replace console cover.



1. Attach your accessories here. SWx is the **Positive** and GND is the negative terminals.
 2. Negative battery terminal.
 3. Positive battery terminal.
 4. Switch panel harness input.
 5. Switch panel fuse.
 6. Low voltage detection circuit.
 7. Low voltage detection circuit fuse. Remove this fuse to disable LVCO
 - If the LVCO detects a low voltage (10.6VDC) and shuts the sPOD down, turn off all switches on sPOD and start the vehicle to enable the sPOD again.
 8. Accessory fuses. Any fuse can go here up to 30 AMPS. (6 pl.)
 9. Relays that are removable.
- Always keep your engine running whenever possible when powering electrical accessories

**After installation
 !!!Must start engine to activate system!!!**