

Bandi Mount Instructions

Package Content:

1 - Satin Black "Bandi Mount" for CB Antenna or Flag Mount.

1 - 1/4"-20 Nylock Nut.

ITEMS NEEDED:

Masking Tape (or equivalent)

Mid size Flat Head Screwdriver (or equivalent)

7/16" Open-End Wrench

Instructions:

Before installing the mount, cover the areas in red on [Image 0](#) with masking tape to protect the FJ's paint during mount installation. Be sure to fold it over the edges of the body and the door for maximum protection. Door position during installation should not be in the fully opened. The approximate position as shown on [Image 5](#) should be used.

First, you need to remove the center plastic hinge cover. This cover is only snapped on over the hinge. It has two stubs sticking out that slide into the mounting hole shown on [Image 2](#). From inside of the opened door, you need to spread the two halves of the plastic cover and push it outwards.



Image 0

For CB Antenna mounting (unless you get a Groundless RV/Marine type Antenna), there must be a ground contact for best TX/RX of the CB. You will have to remove the paint on the underside of the mount in the area of contact with the bottom section of the antenna so that the two pieces make contact to complete the ground. This area is shown in red on [Image 1](#). This can easily be achieved with a mid size flat head screwdriver, by scraping away the paint from inside the red circle area.

Install and tighten your CB Antenna Base connector onto the mount prior to the mount installation on the vehicle. If done at a later time, you will need a deep socket to hold the underside of your CB mount to be able to tighten the top part.

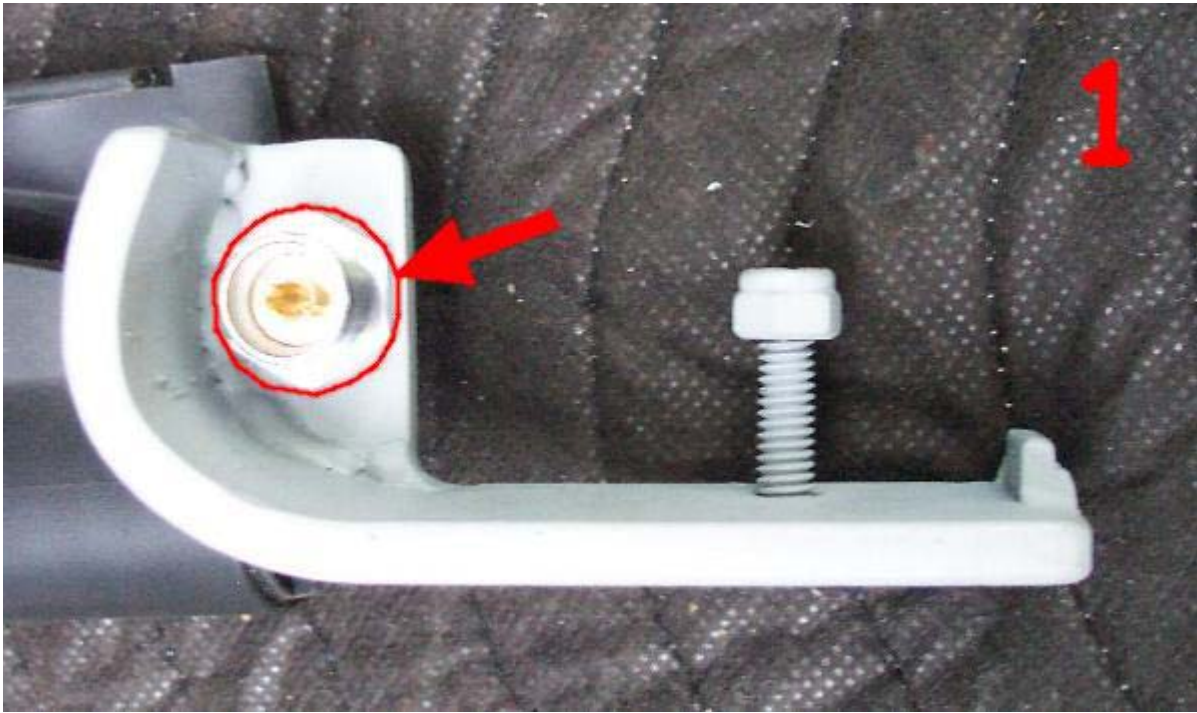


Image 1

[Image 2](#) shows the location of the mounting hole that is already on you FJ's Hinge. This will be where the mount bolt will go through when you place the mount in position.

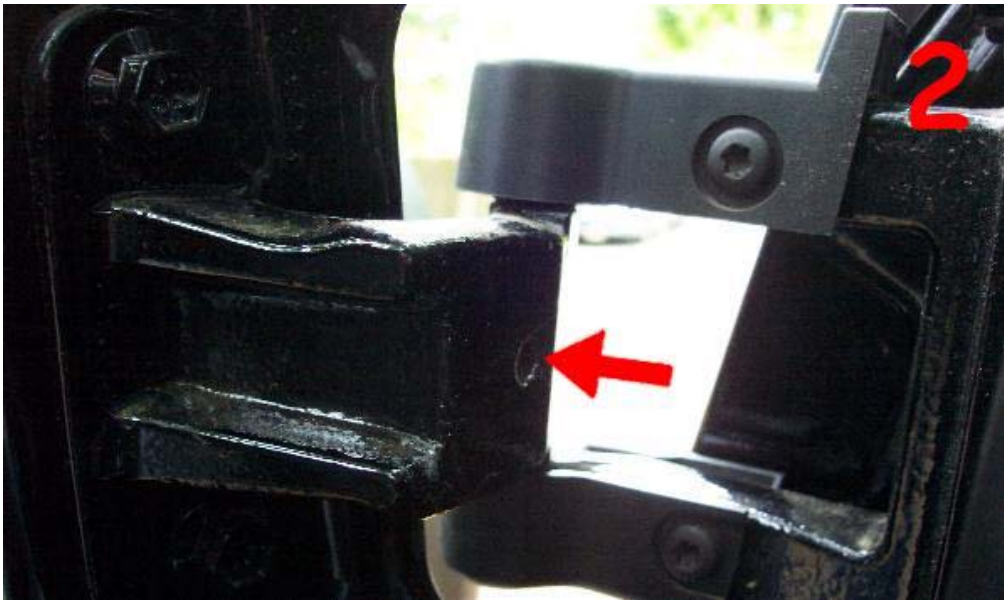


Image 2

As done in step 2, For CB Antenna mounting (unless you get a Groundless RV/Marine type Antenna), there must be a ground contact for best TX/RX of the CB. You will have to remove the paint on the hinge where the stainless steel nut (included in your package) makes contact with the hinge. This area is shown in red on [Image 4](#). This also can easily be achieved with a mid size flat head screwdriver, by scraping away the paint from inside the red circle area.

With the door in position as shown on [Image 5](#), place the mount through the space as shown on [Image 3](#), and line up the bolt with the hole in the hinge and slide it through so that the end of the bolt is flush with the other of the hinge.



Image 3

Place the SS-Nut in the 7/16" open end wrench and slide it over the hole between the door and the hinge. Now press the mount from the back side and turn the nut to get it started. Snug up the mount by tightening the SS-Nut, but leaving it loose enough to adjust the mount to be centered on the hinge.

Close the door slowly making sure not to damage the mount due to being out of alignment with the hinge at this point. Do this by watching as you close the door for any contact between the mount and the top and bottom hinge covers.

Eye-Up the mount from the side of the FJC and adjust it by rotating a hair up or down so that the angle matches the top and bottom hinge covers.

Tighten the SS-Nut so that the mount is stable and will not rotate out of position. The bolt on the mount looks small, but it is plenty strong enough to hold the mount in place, and the rough surface coating on the hinge works as a grip to the mount once you tighten it down.



Image 4

The Bandi Mount installation is now complete. You can now install the antenna mast and run the cable into the vehicle under the hinge. We recommend feeding the cable through the rubber wire plug located below the hinge. If you have any questions please give us a call at 951-658-7077 for more help