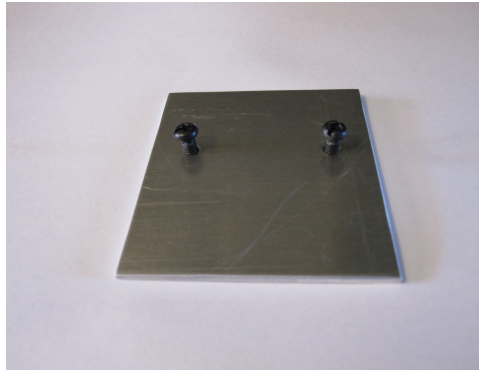
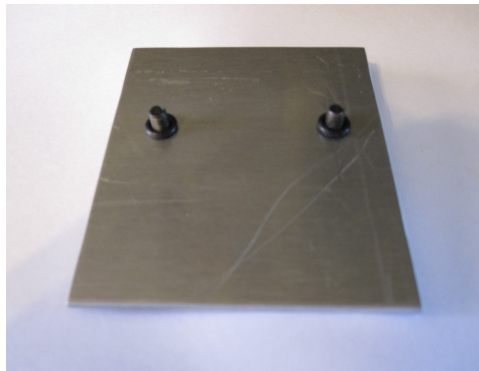


Installation instructions for DashDAQ-XL: Ford Powerstroke 6.4 Liter



Step 1: Insert screws included in your DashDAQ into aluminum backer plate.



Step 2: Attach o-rings provided onto threads exposed on back of plate. O-rings provide necessary spacing between aluminum plate and DashDAQ and also minimize vibrations.



Step 3: Screw plate onto DashDAQ ensuring that the speaker side is up, using the top screw holes. Holes on backer plate should be closer to the top at installation. Do not over tighten.

Questions: Send email to support@dfuser.com