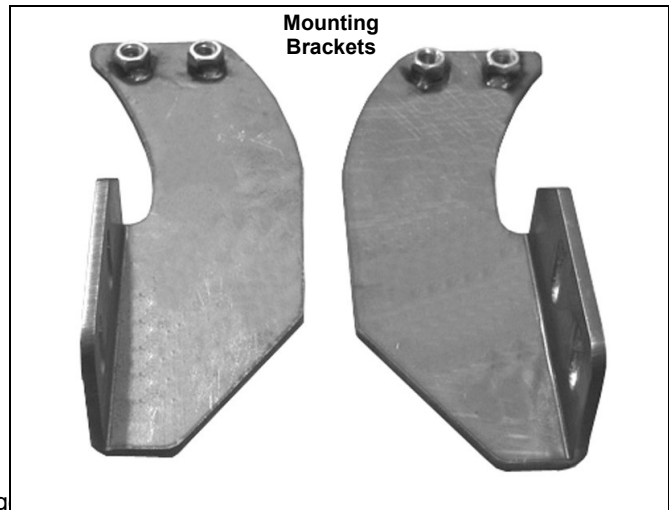
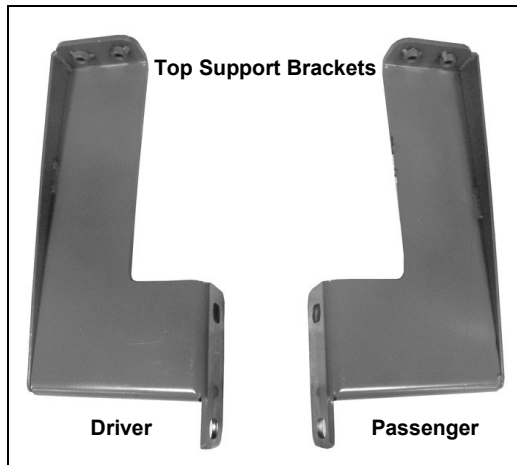
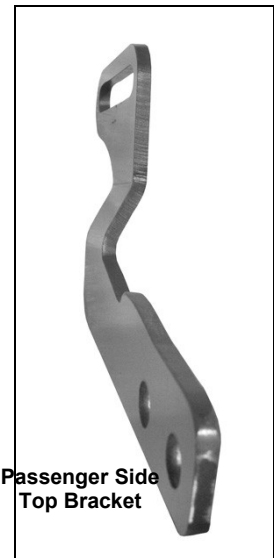
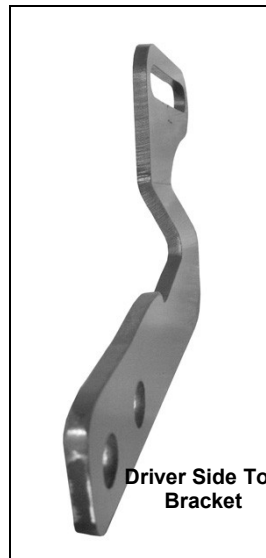
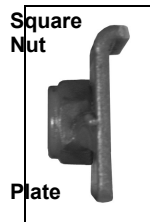
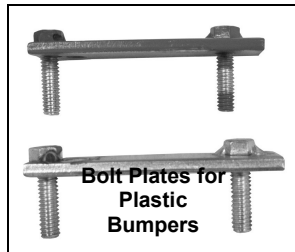


INSTALLATION INSTRUCTIONS

GRILLE GUARD 07 TOYOTA TUNDRA PART NUMBER

PARTS LIST:

1	Grille Guard	4	10-1.50mm x 30mm Hex Head Bolts
1	Driver/Left Side Mounting Bracket	4	10mm Lock Washers
1	Passenger/Right Mounting Bracket	12	10mm ID x 30mm OD x 3mm Flat Washers
1	Driver/Left Top Bracket	8	10mm Nylock Nuts
1	Passenger/Right Top Bracket	4	12-1.75mm x 35mm Hex Head Bolts
1	Driver/Left Top Support Bracket	4	12mm Lock Washers
1	Passenger/Right Top Support Bracket	10	12mm ID x 30mm OD x 3mm Flat Washers
2	10mm Double Bolt Plates	2	12-1.75mm x 35mm Allen Head Bolts
2	10mm Square Nut Plates	4	12mm Nylock Nuts



PROCEDURE:

1. REMOVE CONTENTS FROM BOX. VERIFY ALL PARTS ARE PRESENT. READ INSTRUCTIONS CAREFULLY BEFORE STARTING INSTALLATION.
2. **WARNING!** This Grille Guard is designed to swivel forward by partially loosening the Top Brackets Bolts and the upper bolt on the Mounting Bracket when the hood needs to be opened for service. Make sure that all hardware is fully tightened after closing the hood. Read page 4 opening and closing of hood before installing Grille Guard.
3. From underside of vehicle remove the factory tow hooks and set aside.
4. Determine Driver/Left and Passenger/Right Mounting Bracket. Refer to figures on page 1 for bracket configuration.
5. Hang Driver/Left side Mounting Bracket into position by partially threading the two factory bolts (**Figure 1**). **NOTE:** Tow hooks can be re-mounted by placing them on top of Mounting Brackets. Use the same factory bolts to re-mount factory tow hooks and Mounting Brackets. Repeat this step for opposite side.
6. Open the hood and locate the two factory holes on the driver side of the bottom radiator core support cross member. From the back of the radiator core support insert (1) Double Bolt Plate (**Figure 2**).
7. Locate driver side Top Support Bracket and oriented into position (**Figure 3**). **NOTE:** Welded nuts on the Top Support Bracket should be facing towards the bottom. Align holes on the Top Support Bracket with previously inserted bolt plate. Secure Top Support Bracket to Top Plate using the included (2) 10mm Nylock Nuts and (2) 10mm Flat Washers (**Figure 4**). Do not tighten at this time.
8. Attach driver side Top Bracket to Top Support Bracket using the included (2) 10mm x 30mm Hex Head Bolts, (2) 10mm Lock Washers, (2) 10MM Flat Washers (**Figure 8 & 9**).
9. Repeat steps 6 - 8 for Passenger/Right Top Bracket.
10. With help position Grille Guard on the outer side of Mounting and Top Brackets. Attach Grille Guard to Mounting Brackets using the included (4) 12mm Hex Head Bolts, (4) 12mm Lock Washers, and (4) 12mm Flat Washers (**Figure 10**). Do not tighten at this time.
11. Attach Grille Guard to Top Brackets using the included (2) 12mm x 30mm Button Head Allen Bolts, (2) 12mm Square Nuts, and (2) 12mm Flat Washers (**Figure 11**). Do not tighten at this time. **NOTE:** Insert Button Head Allen Bolt through the outer side of Grille Guard and place Square Nut on the inner side of Grille Guard over Top Bracket.
12. Pull the Grille Guard towards the front of the vehicle to its open position (**Figure 15**). Center and level Grille Guard and then tighten all hardware at this time.
13. Close hood, and then partially loosen the bolt on each Top Bracket and the upper bolt on each lower Mounting Bracket (**Figure 13 & 14**). **WARNING!** Do not loosen bolts all the way. Damage to the truck or Grille Guard may occur.
14. Push Grille Guard back as close as possible towards the vehicle, and then tighten all hardware.
15. Do periodic inspections to the installation to make sure that all hardware is secure and tight.

(Driver/Left Side Installation Shown)

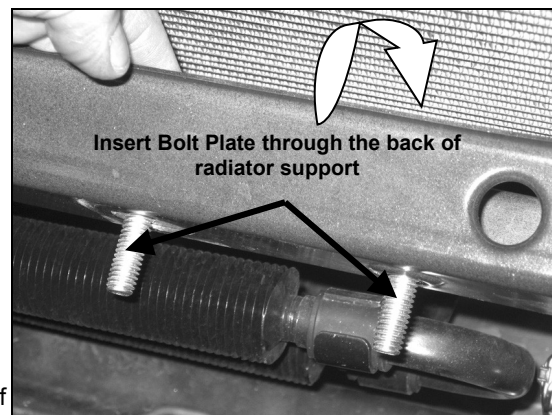
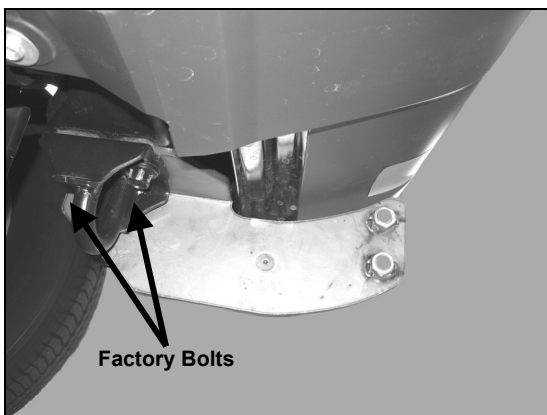
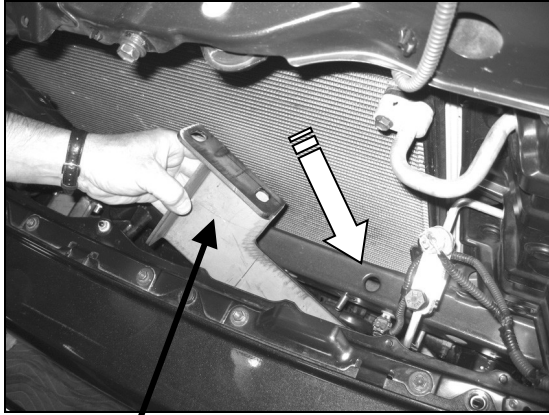


Figure 1



Plastic bumper Top Support Bracket

Figure 3

Figure 2

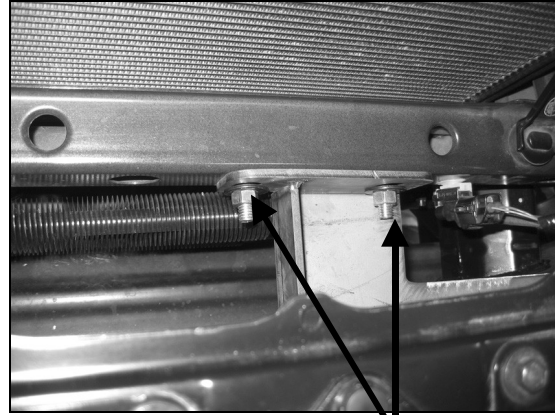
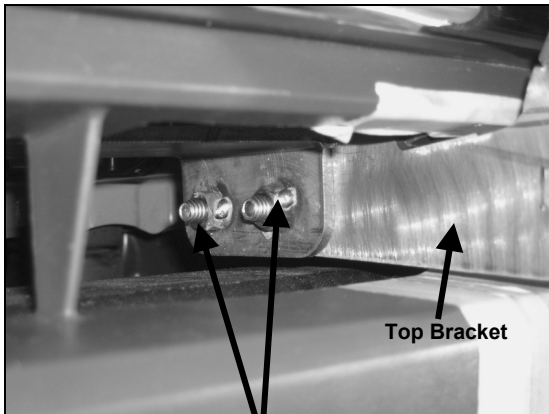


Figure 4

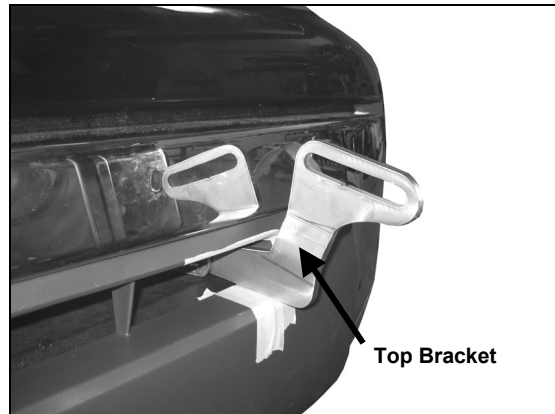
(Bolt Plate)
10mm Nylock Nuts & 10mm Flat Washers



Top Bracket

Figure 8

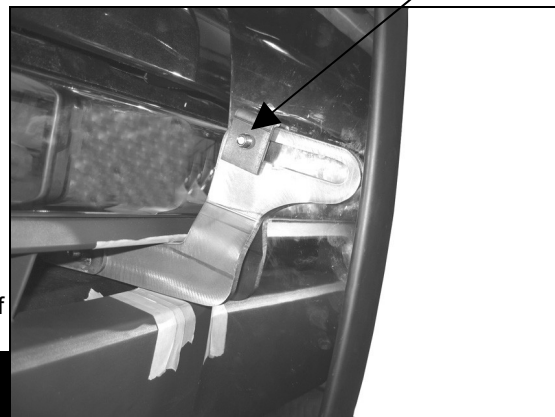
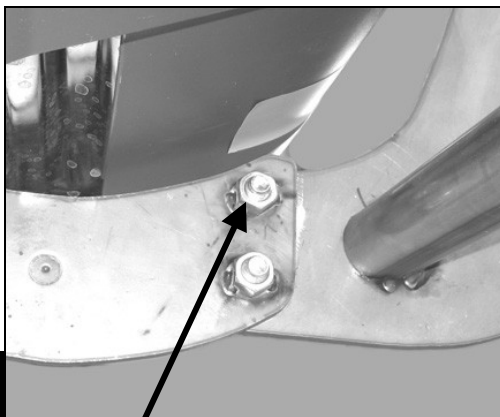
10mm x 30mm Hex Head Bolts, 10mm Lock Washers, & 10mm Nylock Nuts
NOTE: On the chrome bumper Top Bracket there is no welded nuts, so you will be using Nylock Nuts instead of Lock Washers



Top Bracket

Figure 9

12mm x 35mm Allen Head Bolt
12mm Flat Washer
12mm Square Nut



12mm x 35mm Hex Head Bolts
 12mm Lock Washers
 12mm Flat Washers

Figure 10

Figure 11



Figure 12

(Opening and closing the hood)

16. Partially loosen upper bolt on each lower Mounting Bracket, and then proceed to loosen up the bolt on each Top Bracket (**Figure 13 & 14**). **WARNING!** Do not loosen bolts all the way. Damage to the truck or Grille Guard may occur.
17. Carefully pull on the Grille Guard until it is fully extended away from the vehicle (**Figure 15**).
18. Pull on the hood release and then open hood.
19. **IMPORTANT!** Before closing the hood make sure that the Grille Guard hasn't been pushed back to its closed position and it is fully extended away from the vehicle, then close the hood.
20. Once the hood is completely closed, push Grille Guard back to its closed position and tighten all hardware on the Grille Guard, even hardware that wasn't loosen up.
21. Do periodic inspections to the installation to make sure that all hardware is secure and tight.

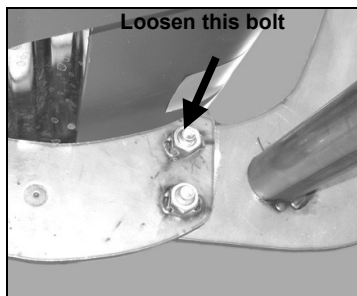


Figure 13

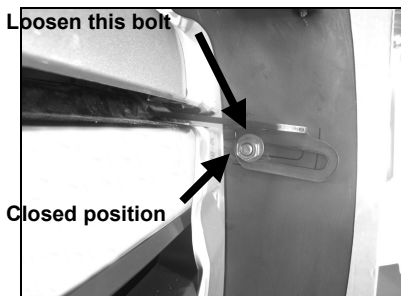


Figure 14

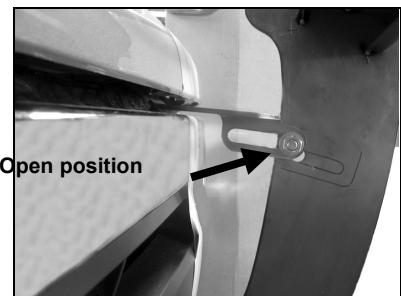


Figure 15

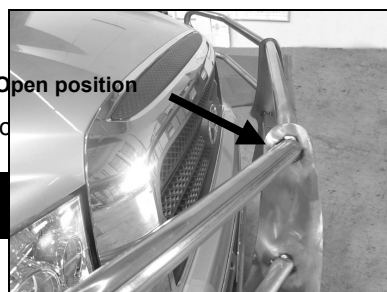
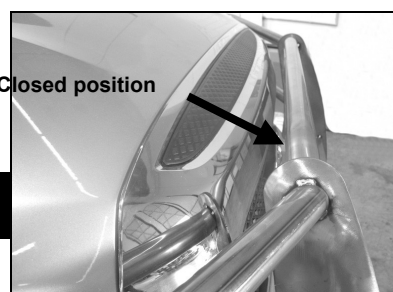


Figure 16

Figure 17