



INSTALLATION INSTRUCTIONS

TOYOTA FJ CRUISER EXPEDITION PARTITION #163

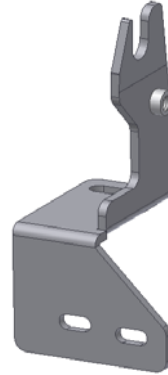
This product will only mount to Tuffy part# 145.

Please read and fill out the enclosed warranty registration card to activate your warranty.

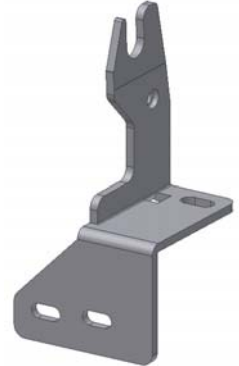
PARTS LIST



#1 Partition assembly



#10 Driver side mount



#9 Passenger side mount

SHIPPING PACKAGE CONTENTS



#6.1 (2) 5/16-18 Knob screw



#5.4 (2) 5/16-18 x 7/8" Bolt



#5.1 (4) 1/4-20 x 1" Bolt



#5.2 (2) 5/16-18 Nuts



#5.3 (4) 1/4-20 Nuts



#5.6 (4) 5/16" Washers



#5.5 (8) 1/4" Washers

TOOLS REQUIRED

(1) 1/2" and 7/16" socket and ratchet

(1) 1/2" wrench

(1) 7/16" wrench

(1) Phillips screwdriver

Drill and 3/8" drill bit

Silicone sealant is recommended to prevent rusting in any drilled holes (Optional)

PLEASE READ ALL INSTRUCTIONS THOROUGHLY BEFORE STARTING INSTALLATION.

WARNING! This product is designed for organization or pet barrier uses only and is not intended to prevent loose cargo from causing injury or damage in the event of an accident, shifting loads or change in speed. Loose cargo must always be secured to the vehicle.

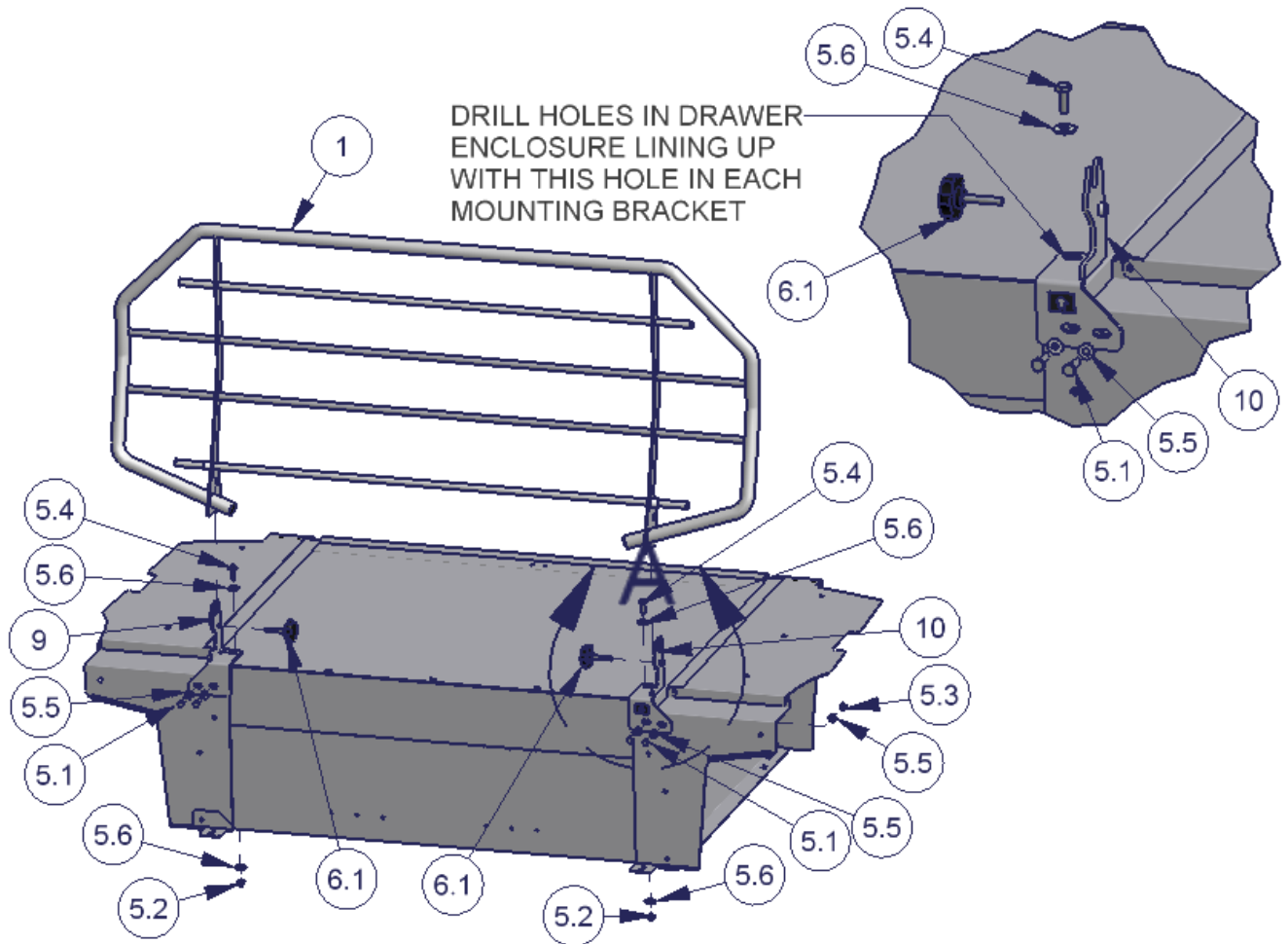
1. Remove the (4) screws, nuts and washers on the Tuffy drawer part #145 where the new brackets and screws #5.1 will be fastened. (See Figure 1)
2. Install the #9 passenger and #10 driver side mounts using #5.1 screws, #5.5 washers and #5.3 nuts as illustrated. (See Figure 1)

3. Install the #1 Partition assembly in the #9 and #10 mounts by rotating the entire assembly down so the tabs slide into the slots on both mounts until seated. Check the clearance, there should not be more than a 1/16" gap between the brackets #9, #10 and #1 Partition assembly. Loosen screws and adjust as necessary. Then remove #1 Partition assembly. (See Figure 1)

WARNING! Make sure there is nothing behind the new hole locations that the drill bit may damage when drilling the new mounting holes.

4. Mark the (2) spots on the top of the drawer enclosure corresponding with the holes in the #9 and #10 mounting brackets where #5.4 screws will be fastened and drill (2) 3/8" holes in these spots. Starting out with a smaller drill bit first is recommended. (See Figure 1)
5. Fasten down mounts #9 and #10 using #5.4 screws, 5.6 washers, and 5.2 nuts through the drilled holes. It is recommended to use silicone sealant on any drilled holes to prevent rusting. (See Figure 1)
6. Reinstall the #1 partition assembly using #6.1 Knob screws. Applying tension to the #1 partition assembly to align holes will make inserting the #6.1 Knob screws easier. The first time the #6.1 Knob screws are inserted they will be tight but will rotate more smoothly after a few times.

FIGURE 1



Call (970) 564-1762 for Technical Support